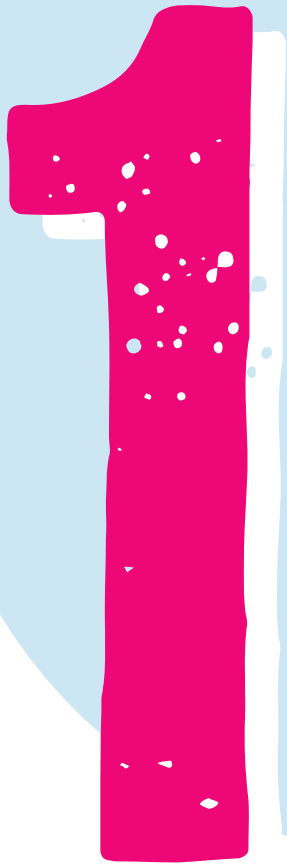


GRUNDON

# SIMPLER RECYCLING

## FAQ'S





# What is Simpler Recycling?

'Simpler Recycling' is the name given to a new set of regulations, introduced by the Government in October 2023.

These regulations aim to clarify which materials are recyclable and non-recyclable, and standardise recycling processes for homes, workplaces, and schools throughout England.

**It means all businesses and other non-household premises with 10 or more full-time employees, must separate dry recyclables (plastics, paper, cardboard, glass, metals) and food waste from general waste, regardless of volume.**

This doesn't require having individual bins for each material type, but rather ensuring these materials are not mixed with general waste and are directed towards recycling.





## When will it come into effect?

**IT WILL FIRST AFFECT BUSINESSES FROM 31 MARCH 2025 ONWARDS.**

Businesses with 10 or more full-time employees are required to separate collections for dry recyclables (plastics, paper, cardboard, glass, metals) and food waste, regardless of volume.

Micro-firms (businesses with fewer than 10 full-time employees) have until 31 March 2027 to comply.

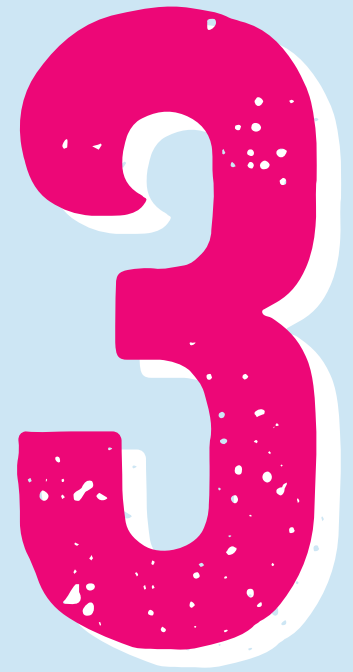
Also from 31 March 2027, all businesses will need to separate recyclable plastic film.



## Why is Simpler Recycling happening?

The goal of Simpler Recycling is to eliminate confusion over recyclables, ensuring standardised recycling practices across England.

This initiative helps the environment and can save businesses money by improving their recycling practices, which may reduce waste disposal costs.

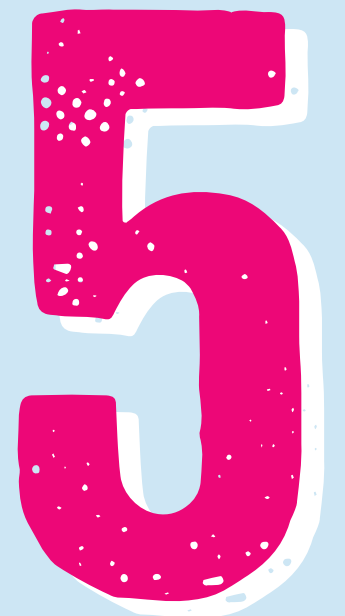


## What if my business has multiple sites?

All businesses with 10 or more full-time employees are required to comply with Simpler Recycling regulations by 31 March 2025. This standard applies to the entire business, not individual sites. Even if a specific site has fewer than 10 employees, the business must comply if the total number of employees across the company exceeds 9.

## What will happen if my business is non-compliant?

Businesses that do not segregate food waste, glass and dry mixed recyclables, risk non-compliance and may face severe financial penalties. The details of this are yet to be confirmed.



# 6

## Which waste streams need to be segregated?

Businesses are required to separate glass, dry mixed recyclables, and food waste from general waste. All dry mixed recyclables (metals, plastics, paper and card) can go into one container.



**mixed recycling**

paper, card, cans & plastic bottles



**mixed glass  
bottles & jars**



**food waste**

GRUNDON

How can my  
business prepare for

# SIMPLER RECYCLING



For more information

 [www.grundon.com/simpler-recycling](http://www.grundon.com/simpler-recycling)

 [sales@grundon.com](mailto:sales@grundon.com)

 01491 834 311